

PSET PLE 2009 EXTRACT

PUPIL'S COMPLETE INDEX NUMBER				
Province/City	District	Sector	School	Pupil
<input type="text"/>	<input type="text"/>	<input type="text"/>	<input type="text"/>	<input type="text"/>

PUPIL'S FULL NAME

Sur name : _____

Other names : _____

SECTION A (50 MARKS)

1. (a). Why is rain water good for our environment? Give two reasons.

(b). Write two reasons why rain water is bad for our environment.

2. Is the moon a natural source of light? Explain your answer.

3. (a). Why is a hoe made of a metal?

(b). Write two reasons why a saucepan is made of metal.

4. (a). What causes water to change from a liquid state to gas?

(b). What is the name of water in a solid state?

5. (a). What is meant by the term "mass of a body"?

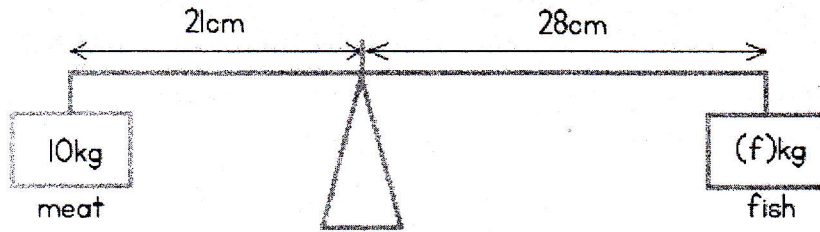
(b). What is the unit of mass?

(c). Why does relative density have no unit?

6. Explain why a stone sinks in water while a dry wood floats on water.

7. Why are tea cups made of poor conductors of heat?

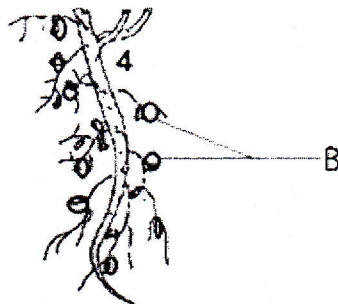
40. The diagram below is of a weighing scale.



(a). If meat (10kg) and fish (f kg) balance the scale, find the mass of fish.

(b). How is a car jack useful to people?

41. The diagram below shows roots of a certain plant. Use it to answer questions that follow.



(a). Name the parts labelled B.

(b). What group of plants has such roots?

(c). What do the parts labelled B contain?

(d). What is the function of what you have mentioned in part (c) above?

8. (a). Draw a simple electric circuit which has a torch, cell, a switch and a bulb.

(b). It is not good to touch an electric switch when the fingers are wet. Why?

9. Read the statements below and write **TRUE** for a correct answer and **FALSE** for a wrong answer.

(a). Sound does not travel through solids.

(b). Sound travels through a vacuum.

(c). Echoes are caused by refraction of sound.

10. Name any two simple machine used by a tailor.

11. Write any two properties of a magnet.

12. State any two reasons why oxygen is important.

13. (a). Draw a labelled diagram showing how a ray of light is reflected by a plane mirror. On your diagram, name angle of incidence and angle of reflection.

(b). Why does a ray of light coming from the air bend as it enters the surface of water? _____

14. It is not good to wear thick black clothes on a hot day. Why?

15. The diagram below shows the beak of a bird.



Why do you think a bird with this kind of beak is a meat eater? -----

16. How does a chameleon protect itself from its enemies?

17. What group of mammals has a more developed brain for reasoning?

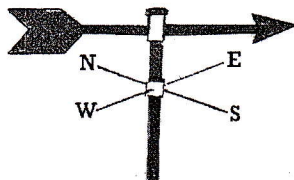
18. Why are telephone wires left loose in between poles?

19. What change takes place when wood burns to ash?

20. Shyaka has a radio that uses 6 dry cells of 1.5 volts. What is the voltage used?

21. State any one water borne disease.

22. (a). What is the use of the instrument shown in the diagram below?



(b). Suggest one instrument that has the same function as the one shown

23. State one method of avoiding tooth decay.

24. Apart from light, carbon dioxide and water, what else does a leaf need to manufacture food? -----

25. Why should we bathe daily?

26. Mention one reason why drinking water should be boiled.

27. What helps a frog to swim easily?

28. Why shouldn't people with AIDS be isolated?

SECTION B (50 marks)

29. From number (a) to (d), answer True or False.

(a). Proteins are for growth and repair; they should therefore be given to children _____

(b). Glucose is used to provide energy during exercises; it should not be given to young children. _____

(c). The circulatory system consists of the heart and blood vessels.

(d). HIV can be transmitted through blood when people share syringes and other stained instruments. _____

30. Give at least two examples of omnivores animals.

(b). Give one example of a carnivorous animal.

(c). Name one domestic animal you are familiar with.

31. (a). Name the long tube through which our food passes as it is being digested.

(b). The organ responsible for pumping blood in the human body is;

(c). Name at least two excretory organs in animals.

32. Cutting is a method used in planting some plant items.

Give two examples of such plants.

33. (a). What causes beriberi in most children?

(b). Goitre is a disease which is characterized by the swelling of the thyroid gland. What causes it? _____

(c). How can goitre be prevented?

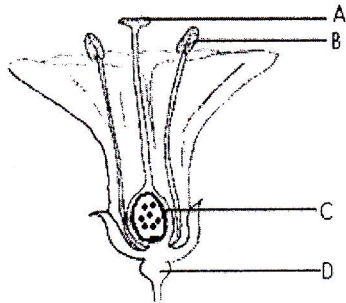
34. (a). Each part of a plant has a particular function. What are the functions of :

Flowers _____

Leaves _____

Fruits _____

(b). Name the parts of a flower labelled A, B, C and D.



A is _____

B is _____

C is _____

D is _____

(c). What is the function of A, B and C?

A _____

B _____

C _____

(d). What are sexual cells in a human being?

(e). What happens after fertilization in plants?

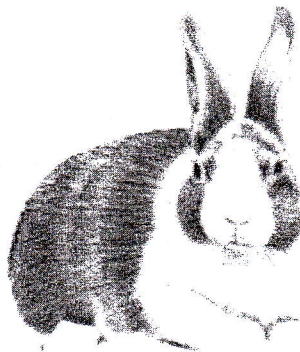
35. (a). Fish is adapted to swimming. What features enable it to swim?

(b). What features of a bird enable it to fly?

36. (a). What is kwashiorkor?

(b). Give two symptoms of kwashiorkor?

37. The animal below is of a rodent.



(a). What do rodents feed on?

(b). Give one characteristic of rodents?

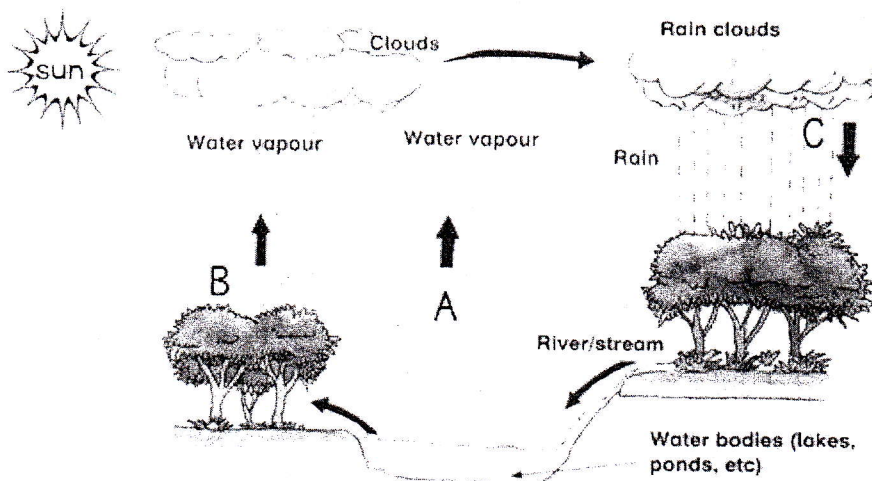
38. (a). What is forest conservation?

(b). Give at least three reasons why we should conserve our natural forests.

39. (a). What is pollution?

(b). Give two reasons why it is dangerous to use polluted water?

40. The diagram shows a water cycle.



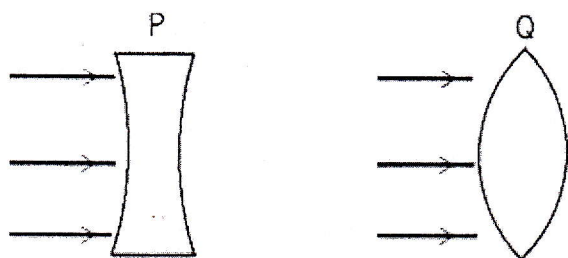
(a). Name the processes at A and at B.

A _____ B _____

(b). Name any one change likely to occur at C.

(c). What is the role of the sun in the cycle?

41. The diagram below shows parallel rays striking different lenses.



(a). Complete the diagrams P and Q so that they show the rays after they pass through the lenses.

(b). Name the lenses shown in P and Q.

Lens P _____ Lens Q _____